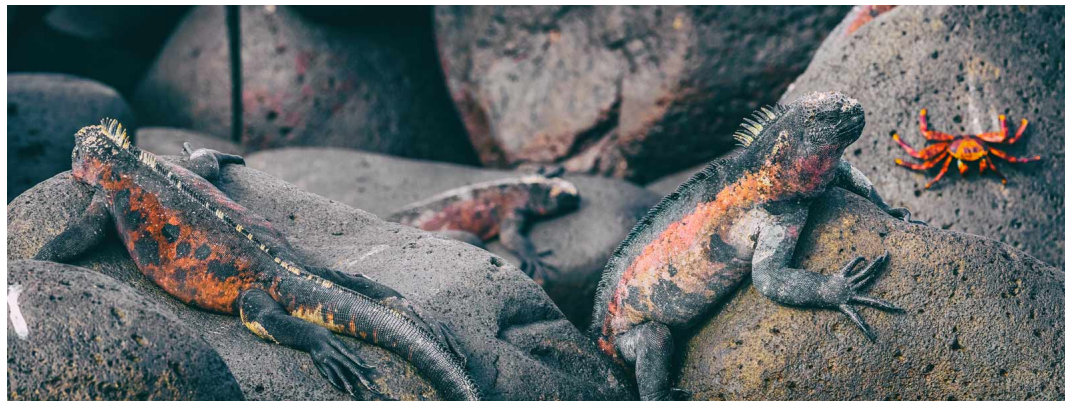


ECUADOR - GALAPAGOS 8 DAY EASTERN ISLANDS CRUISE | MONIQUE



INTRODUCTION

Embark on a 8-day journey through the Southern and Eastern Galapagos Islands aboard the Monique. This itinerary includes visits to Santa Cruz, Floreana, Espanola, San Cristobal, Santa Fe, and South Plaza Islands, offering opportunities to observe diverse wildlife such as giant tortoises, blue-footed boobies, marine iguanas, and sea lions. Engage in activities like hiking, snorkelling, kayaking, and dinghy rides, immersing yourself in the archipelago's unique ecosystems and stunning landscapes.

Enjoy exclusive savings when you pair your Galapagos cruise aboard the Monique with a luxury stay at [La Selva](#) Lodge in the Amazon. [Get in touch](#) for details and pricing.

ITINERARY

TRIP CODE

ECGGME8B

DEPARTURE

Selected Thursdays

DURATION

8 Days

LOCATIONS

Ecuador & Galapagos Islands



ECUADOR - GALAPAGOS 8 DAY EASTERN ISLANDS CRUISE | MONIQUE

DAY 1: Arrive Galapagos Islands

Upon arrival, you will be welcomed and assisted at the airport, then transferred from Baltra Airport to the M/C Monique. In the afternoon, visit the Fausto Llerena Breeding Center, also known as the Charles Darwin Research Station. The center hosts an interpretation center, museum, library, and tortoise breeding facility, home to various tortoise subspecies being prepared for reintroduction. After the visit to the Charles Darwin Research Station, we continue to highlands of Santa Cruz, you'll have the opportunity to see the famous giant tortoises in the wild. So renowned are these endemic animals that they gave the archipelago its name. Birdwatching is also one of the activities do to in the Santa Cruz highlands, since this area is home of finches and other Galapagos birds.



DAY 2: Post Office Bay & Cormorant Point

This morning, experience an island tradition that dates back to the 18th century when whalers used a wooden barrel to exchange mail—a custom you can still participate in today. Enjoy snorkeling, kayaking, or walking and swimming through a lava tunnel. In the afternoon visit two contrasting beaches—one with olivine-rich green sand, and the other a white coral "Flour Beach" created by parrot fish over thousands of years. A saltwater lagoon nearby is frequented by one of the archipelago's largest populations of Galapagos flamingos, and is home to stilts, pintails, and flycatchers.



TRIP CODE

ECGGME8B

DEPARTURE

Selected Thursdays

DURATION

8 Days

LOCATIONS

Ecuador & Galapagos Islands



ECUADOR - GALAPAGOS 8 DAY EASTERN ISLANDS CRUISE | MONIQUE

DAY 3: Punta Suarez & Gardner Bay

Begin your day at Punta Suarez, one of the most biologically diverse sites in the Galapagos. As you follow a rugged trail along dramatic sea cliffs, you'll pass by large colonies of Nazca and blue-footed boobies, boldly curious mockingbirds, vibrantly colored marine iguanas, and — during the right season — the world's only population of waved albatrosses. Watch as these majestic birds court, nest, or launch themselves gracefully into the ocean air. Spend the afternoon on the soft white sands of Gardner Bay, a pristine beach where sea lions lounge and the ocean invites you in. Whether you choose to swim, snorkel, kayak, or paddleboard, the surrounding turquoise waters offer a perfect opportunity to observe marine life. Just offshore, Gardner and Osborn Islets are home to coral reefs teeming with tropical fish, rays, and playful juvenile sea lions — ideal for a vibrant snorkeling adventure.



DAY 4: Kicker Rock & San Cristobal Interpretation Centre

Start your morning with breathtaking views of Kicker Rock — a towering, twin-peaked volcanic formation rising from the sea. This iconic landmark is a haven for seabirds such as blue-footed boobies and frigatebirds, often seen perched on its narrow ledges. Then head to Witch Hill, a secluded bay with fine white sand and crystal-clear waters perfect for swimming or snorkeling. Its shallow saltwater lagoon offers a peaceful setting ideal for spotting marine life and enjoying views of Kicker Rock from a unique vantage point. In the afternoon, broaden your understanding of the archipelago at the San Cristobal Interpretation Center. This modern facility offers engaging exhibits that trace the Galapagos' geological beginnings, ecological richness, and complex human history over time. Learn about the unique species that call these islands home and the ongoing conservation initiatives working to protect their fragile ecosystems for generations to come.



TRIP CODE

ECGGME8B

DEPARTURE

Selected Thursdays

DURATION

8 Days

LOCATIONS

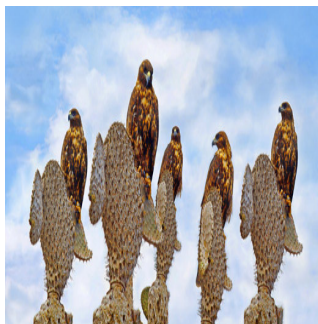
Ecuador & Galapagos Islands



ECUADOR - GALAPAGOS 8 DAY EASTERN ISLANDS CRUISE | MONIQUE

DAY 5: Santa Fe & South Plaza

Begin your morning by landing on Santa Fe, one of the oldest islands in the Galapagos, known for its towering forests of Opuntia cacti and distinctive pale-yellow land iguanas. Hike along scenic trails that lead you across the island’s arid landscape or into the highlands where these endemic iguanas bask under the sun. After your walk, cool off in the calm, crystal-clear waters of the bay — ideal for swimming or snorkeling alongside playful sea lions, rays, and colorful reef fish. In the afternoon, explore the compact yet incredibly diverse South Plaza Island. Its vivid red and green Sesuvium ground cover contrasts dramatically with the island’s black lava and towering prickly pear cacti. Here, you can often see swallow-tailed gulls, tropicbirds, and other seabirds nesting or riding the thermals above the crashing waves.



DAY 6: Genovesa Island

This morning you will disembark on the white coral beach of Darwin Bay, the only sandy landing site within Genovesa’s volcanic caldera. During breeding season, male frigatebirds inflate their striking red throat pouches in elaborate mating displays while red-footed boobies perch on the mangrove branches. In the afternoon visit, El Barranco, also known as Prince Philip’s Steps, a rocky stairway that leads past a colony of Nazca and red-footed boobies up to a plateau of dried lava. Continuing through the thin Palo Santo Forest and looking out over the plain, visitors are often treated to sites of storm petrels launching out over the ocean. A dinghy ride or kayaking along the edge of the cliffs provides a good chance to see the elusive Galapagos fur seals nestled on the rocks, and snorkeling is a great activity if you fancy a dip with a variety of shark species.



TRIP CODE
ECGGME8B
DEPARTURE
Selected Thursdays
DURATION
8 Days
LOCATIONS
Ecuador & Galapagos Islands


ECUADOR - GALAPAGOS 8 DAY EASTERN ISLANDS CRUISE | MONIQUE

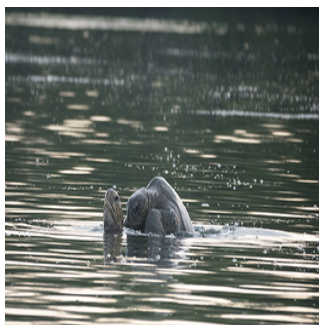
DAY 7: Chinese Hat & Dragon Hill

This morning visit Chinese Hat, a scenic islet off the coast of Santiago Island is known for its striking lava formations. With a maximum elevation of just 160 feet (52 meters) and within easy reach of Santa Cruz, Chinese Hat is typically only visited by those aboard a Galapagos Cruise, and is renowned as one of the best snorkeling spots in the archipelago. In the afternoon you'll head to Dragon Hill, located in the northwestern region of Santa Cruz Island. This visit offers guests the chance to explore the island on foot and observe the remarkable land iguanas—once nearly extinct, now thriving once again. You'll also encounter a saltwater lagoon home to flamingos, pintail ducks, and a variety of endemic bird species such as flycatchers and warblers. A brief hike leads to a stunning viewpoint at the top of the hill. Before returning to the yacht, enjoy some offshore snorkeling in the surrounding waters.



DAY 8: Black Turtle Cove & Departure

After breakfast, you'll explore Black Turtle Cove, located along the northern coast of Santa Cruz Island. This site vividly demonstrates how mangroves shape the marine ecosystem, forming a vibrant and unique habitat. Three different species of mangroves extend from the shore deep into the water, stretching nearly a mile inland. While gliding silently through the calm waters aboard a dinghy, you may spot spotted eagle rays and mustard rays gracefully swimming in formation. Keep an eye out for white-tipped reef sharks gliding beneath the surface and Pacific green sea turtles surfacing to breathe or mate. The area is also a haven for waterfowl, such as pelicans, herons, and egrets, all drawn by the cove's rich feeding grounds. After this last visit, transfer to Baltra airport for your return flight to mainland Ecuador.



TRIP CODE

ECGGME8B

DEPARTURE

Selected Thursdays

DURATION

8 Days

LOCATIONS

Ecuador & Galapagos Islands



INCLUSIONS & DETAILS

Accommodation

Cabin On Board Catamaran

ECUADOR - GALAPAGOS 8 DAY EASTERN ISLANDS CRUISE | MONIQUE

	<h2 style="margin: 0;">INCLUSIONS</h2> <p>Transfers in the Galapagos Islands Airport reception and assistance on the islands Guided expeditions according to the itinerary Top bilingual National Park guide (English-Spanish) Accommodation in cabin, according to your booking Cruise Service Officer Wi-Fi on board Activity daily briefing All meals and snacks while on board Soft drinks and juices One glass of wine or local beer per guest per night Captain’s welcome and farewell cocktail Use of sea kayaks and paddle boards in authorized places Expedition gear (wet suits and fins, water container, and mask and snorkel) Yoga mats Kettlebells and dumbbells Stargazing laser pointer</p>
Inclusions	<h2 style="margin: 0;">EXCLUSIONS</h2> <p>International & internal flights Visa and reciprocity fees (if applicable) Travel insurance Personal expenses Tips and gratuities for guide and crew Beverages other than specified Local taxes Galapagos National Park Entrance fee (USD\$200 per person, subject to change) Galapagos Transit Control Card (USD\$20 per person, subject to change) Any items not mentioned as included</p>
Difficulty Rating	2 (Light Adventure)
Single Surcharge	Single Stateroom is not available for solo passengers. Single Stateroom accommodates additional travelers who are part of odd-numbered groups and families. A single supplement surcharge may apply and is subject to availability. Please contact us for more information.
Notes	<p>Prices are based on per person, twin share. Prices are correct at time of publishing but are subject to change at any time. All entrance fees are subject to change without prior notice.</p> <p>* Itinerary is subject to change depending on weather conditions and government regulations.</p>

TRIP CODE
ECGGME8B
DEPARTURE
Selected Thursdays
DURATION
8 Days
LOCATIONS
Ecuador & Galapagos Islands


ECUADOR - GALAPAGOS 8 DAY EASTERN ISLANDS CRUISE | MONIQUE

Price Dependent upon Departure date, fuel surcharges, cabin category, currency fluctuations, seasonality and availability.

SUSTAINABILITY

TRIP CODE

ECGGME8B

DEPARTURE

Selected Thursdays

DURATION

8 Days

LOCATIONS

Ecuador & Galapagos Islands

